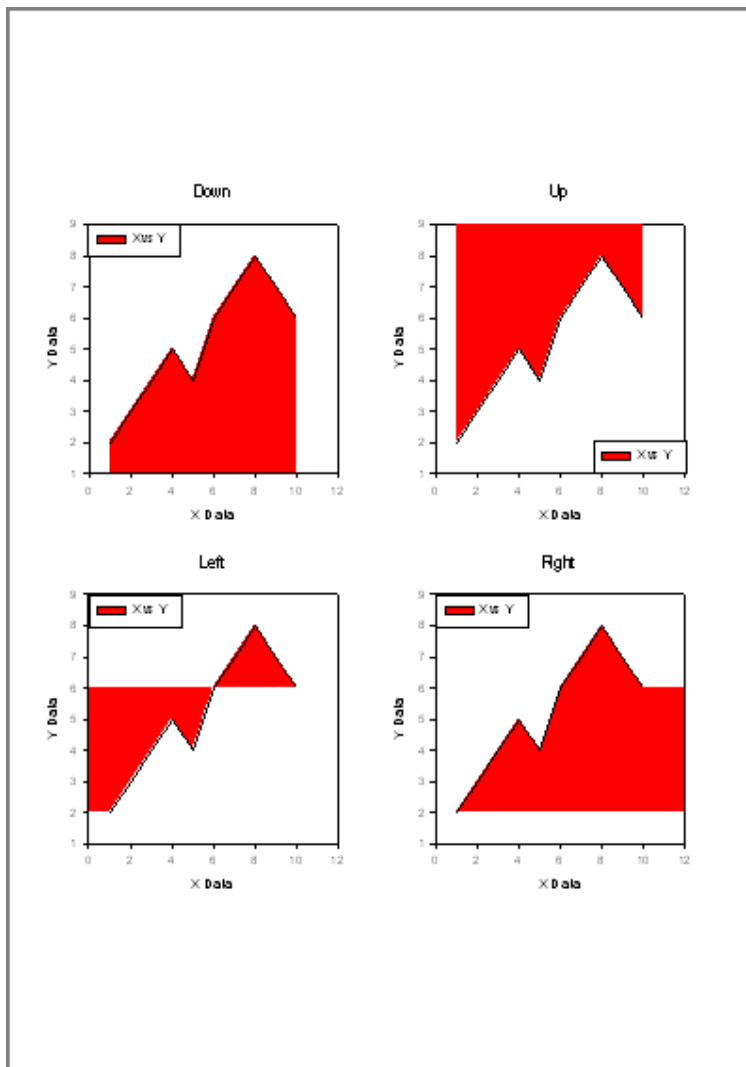


Simple, Multiple, and Complex Area Plots

1. Simple Area Plots
2. Multiple Area Plots
3. Complex Area Plots

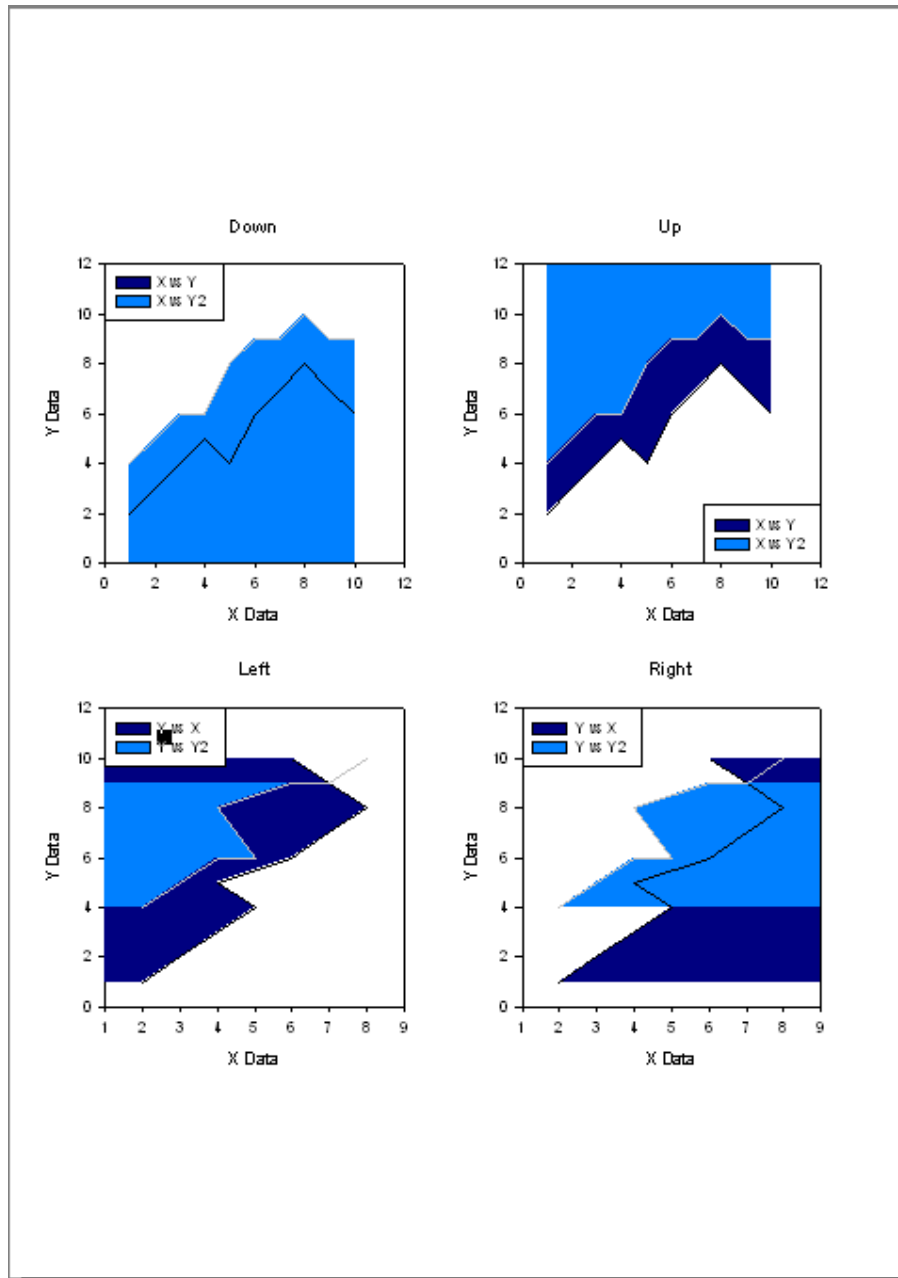
1. Simple Area Plots

Area plots have a fill color in one of 4 directions: up, down, left, right, to the axis in that direction. This applies to XY pair, single X, and single Y graphs.



2. Multiple Area Plots

Multiple area plots add fill colors in one of 4 directions: up, down, left, right, to the axis in that direction. This applies to multiple XY pairs, X many Y, and Y many X, Many Y, Many X graphs. Each curve gets a different color, depending on the selected color ranges.

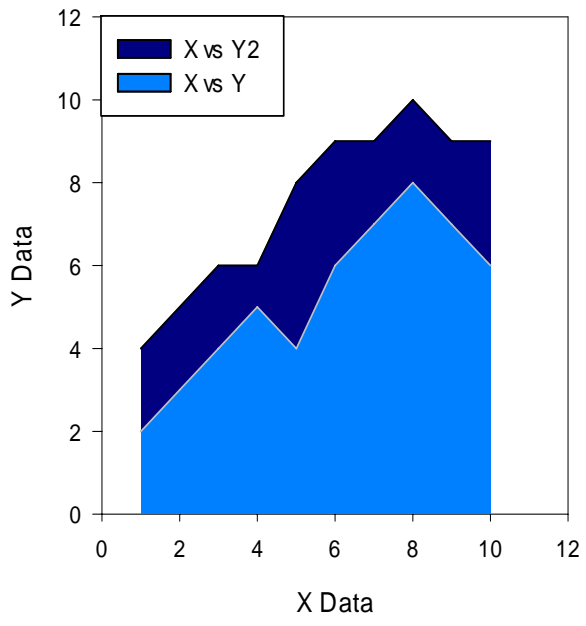


You may see some unexpected results.

The order of curves (the size of the values for the curves) does matter.

If the second curve's values are greater than the first one's, the second curve's fill will overwrite the first one's. In this case, open the Graph Properties dialog, select Plot, click the Graph Wizard button, Back, Next, and repick the columns. In this example, Y2 is picked first, then Y.

Down

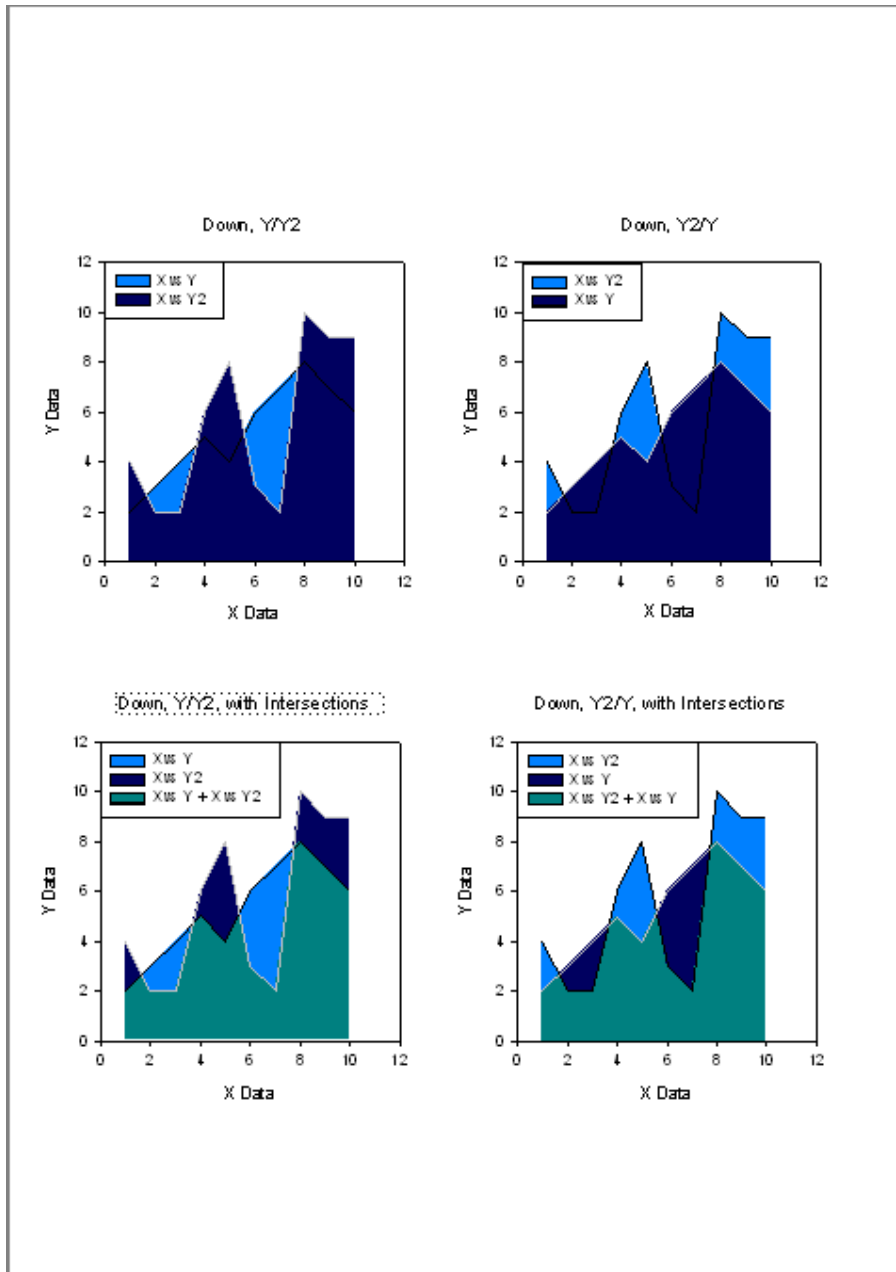


3. Complex Area Plots

Complex area plots also show intersections of multiple lines.

They add fill colors one of 4 directions: up, down, left, right, to the axis in that direction, and the intersections get different colors.

This applies to multiple XY pairs, X many Y, and Y many X, Many Y, Many X graphs. You can display intersections for 2 up to 4 curves.



Like multiple area plots, the order of curves matters (the position of the curves, determined by their values).

In this example, the "Ocean" color range was selected for the fill colors, and the second color in the range was selected as start color (rightclick on the color series name in the Graph Properties dialog for Area Fill color, and select "First Color").