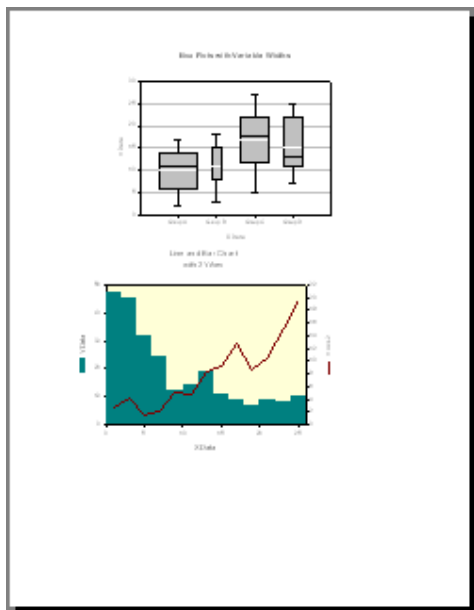


Arranging and aligning Graphs (and other Objects on the Graph Page)

There are several methods to arrange and align multiple graphs/objects on the graph page.



1. Obviously: You can move them with the mouse.
2. You can also select, and then move an object with the arrow keys. See Help: "Nudging".

For orientation, you can switch on a grid on the page. See: Main > Options > Page > Grid.
Also, you can use rulers and crosshairs (see Help: "Working with Grids and Rulers").

And you can add (and later remove) help lines on the page with the drawing tools (Graph Page > Tools).
3. You can set an individual object's position (and size) with a rightclick > Object Properties.
4. To align objects on the page, use the Graph Page > Align function: horizontal, vertical, relative to each other, and relative to the page.

Once you have arranged objects, you can "freeze" them with the Graph Page > Group function.
5. To apply a pre-designed page layout for a certain number of graphs in a defined size, apply the graph page templates: Graph Page > Arrange Graphs.
(Or, in the Notebook Manager/Gallery pane at the left edge: Gallery > Layout > Select a Layout > Rightclick > Apply.)
6. To move a graph or other object on top of or below another one, use the Graph Page > Bring to front, or Send to back function.

Some of these functions are also available in the object > rightclick menu on the page.