

Quick Re-Plot: Pick new data for a plot

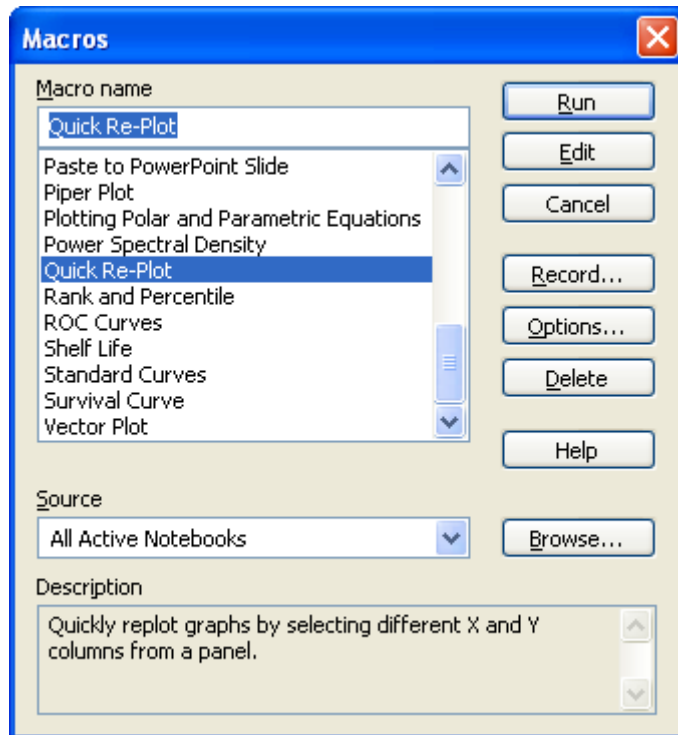
- for a XY plot
- for a plot with multiple curves
- for a graph with multiple plots
- for a 3D graph
- also:
- Adding the macro to the ToolBox ribbon

To modify a graph, select Modify Plot in the Graph Page-Ribbon > Graph Additions. You can re-select the data, change the data format, and even change the graph into another graph type.

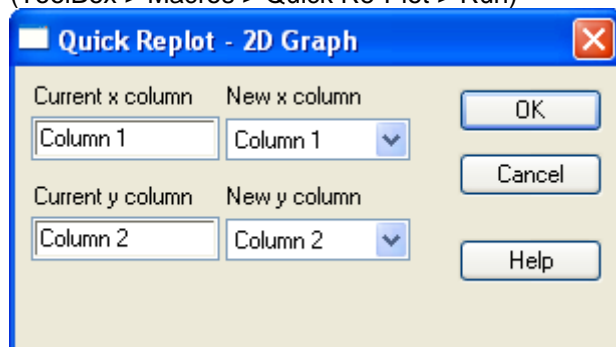
To re-select the data only, there is a shortcut: the „Quick Re-Plot“ macro.

Select the graph on the graph page, and start the macro:

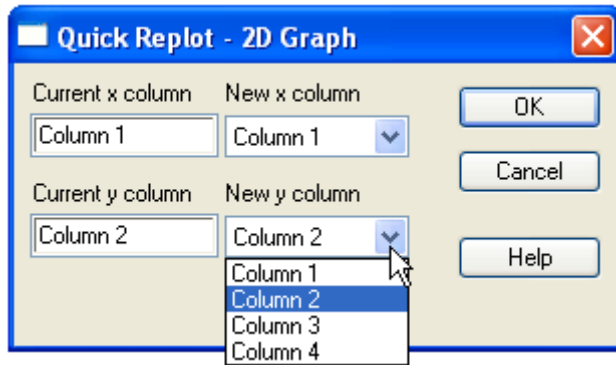
- In the ToolBox ribbon, Macros section, click on „Macros...“.
- In the Macros dialog select „Quick Re-Plot“ from the list,
- and start the macro with a click on „Run“.



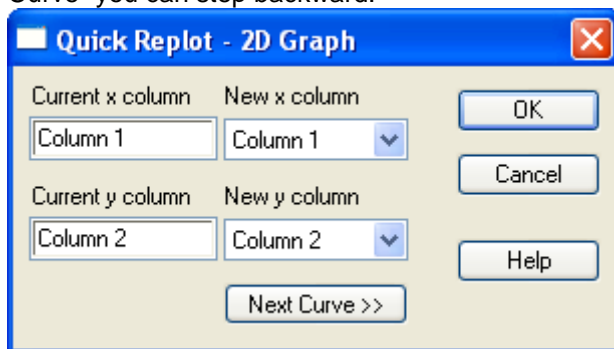
(ToolBox > Macros > Quick Re-Plot > Run)



Under „New x column“ and „New y column“ you can select the new columns.

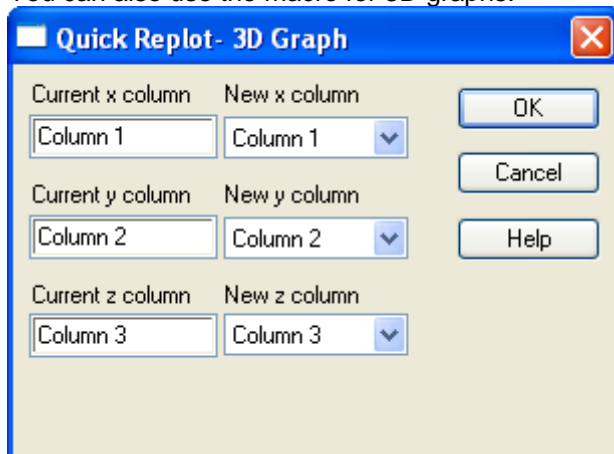


If the plot has more than one curve (e.g. X Many Y), the dialog presents a „Next Curve >>“ button, to step forward to the next curve. With „<< Previous Curve“ you can step backward.



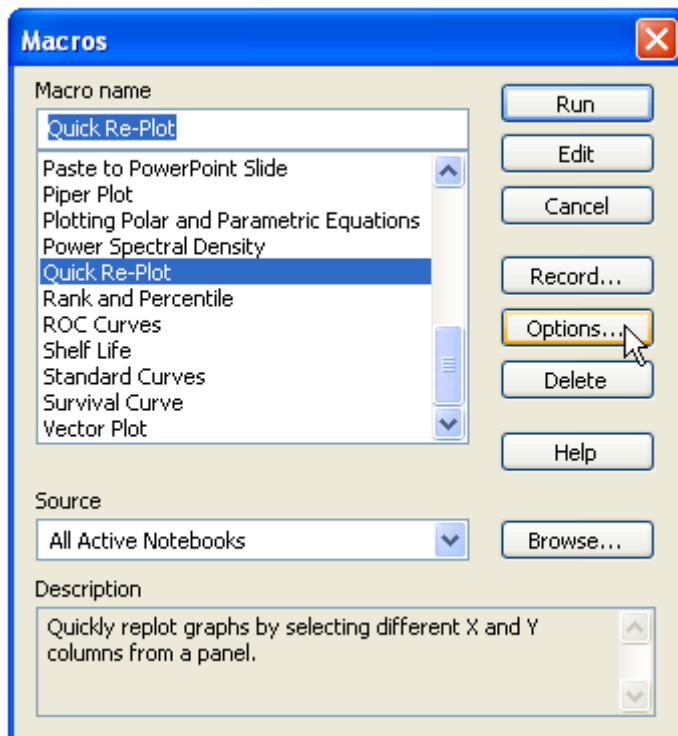
If the graph has more than one plot, please select the plot to be changed before you start the macro.

You can also use the macro for 3D graphs.

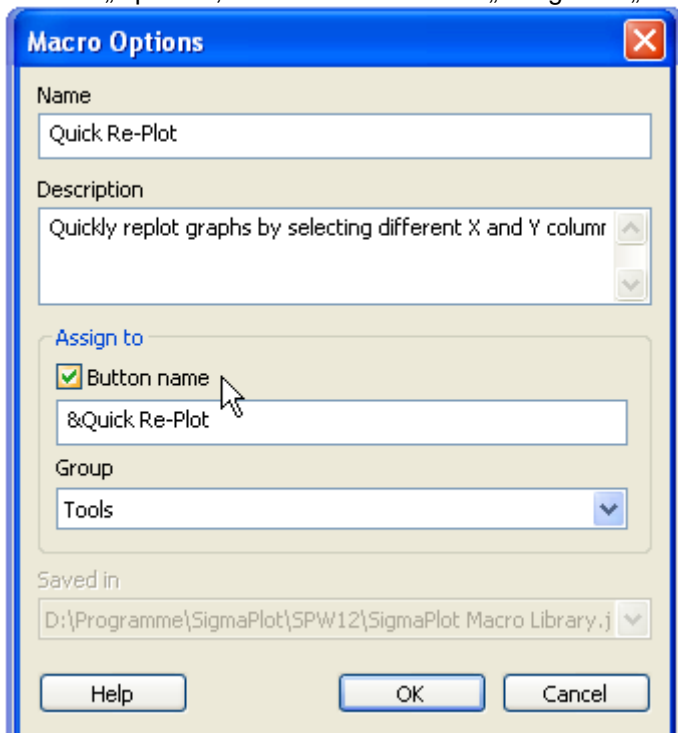


...

You can add the macro to the buttons in the Tools section of the ToolBox ribbon.



Click on „Options“, and set the checkbox „Assign to“: „Button name“.



Now you can run the macro with a click on the „Quick Re-Plot“ button in the ToolBox ribbon.

