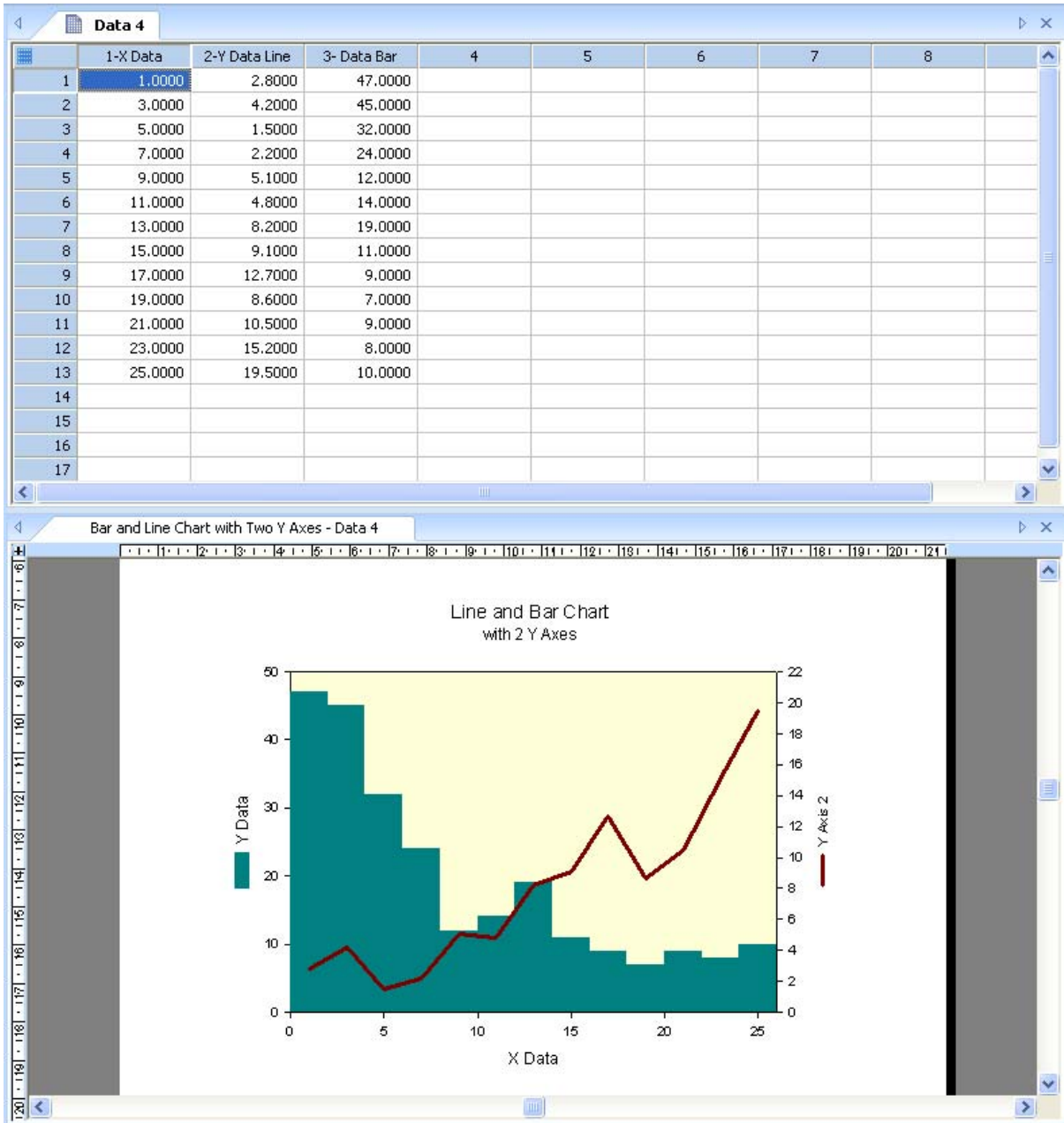


Arranging data worksheet and graph page

In SigmaPlot 12, you can arrange data worksheets and graph pages as cascading, tiled, and tabbed windows. In tabbed mode, you can create groups which let you work conveniently on data and corresponding graph pages.

Example:

Open a graph page. Rightclick on the tab, and select New Horizontal Group.



You might also have the worksheet in one group, and multiple graph pages for the same worksheet in the other group:

