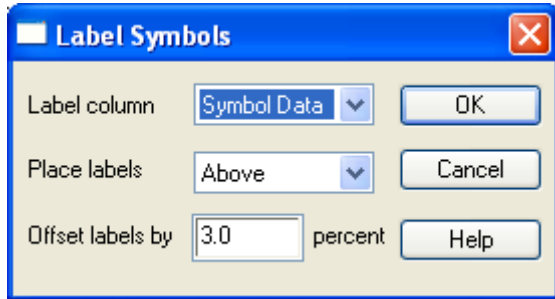


## Adding labels to a Line/Scatter plot or to a Bar plot, using the Label Symbols macro

You can add labels to a Line/Scatter plot or to a Bar plot, using the Label Symbols macro. Download a JNB file with this macro from here: <http://www.systat.de/Transfer/Label-TS.JNB>. The following section shows you how to add this macro to your standard macro library.



This macro labels a scatter or simple bar plot with text from a specified column. Select an offset percentage and one of eight locations for the labels. The offset percentage is a percent of each axis range - 3 to 5 percent is a good starting value. If you have more than one plot in your graph then select the plot you want to label by clicking on a symbol or bar of the particular plot.

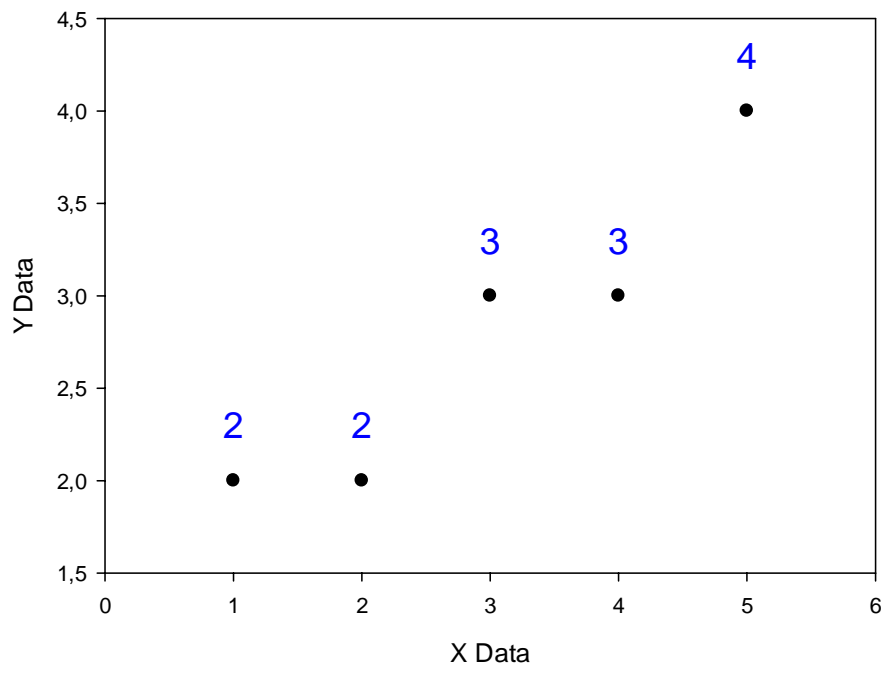
The labels are created as additional scatter plots in the same graph. Rerun the macro to obtain the best position for the labels and then remove the unwanted label plots: Select the plot by clicking on a symbol or bar of the particular plot, rightclick > Delete.

You can label the plot with numbers by placing the numbers in a column and using Format, Cells to change the numbers to text.

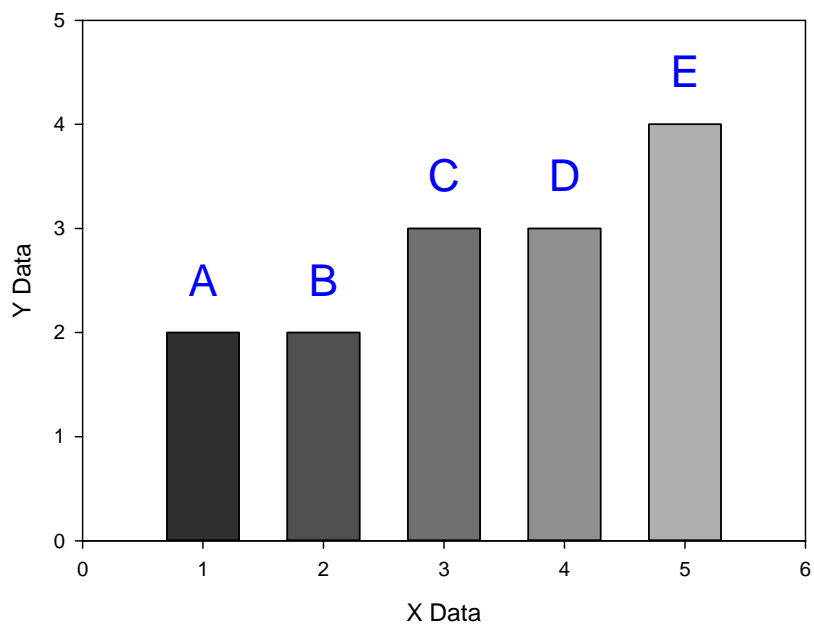
Example: Copy the Y values column to another column. Format that column for a pleasing appearance by removing places (Worksheet > Format > Data > Numeric > Decimal places > Apply; - then Worksheet > Format > Data > Text > OK).

If the label column contains fewer entries than the plot contains symbols or bars, labeling continues by returning to the first case of the label column. For example, in a scatterplot containing six points, if the label column contains three entries (A,B,C), the points are labeled (A,B,C,A,B,C).

2D Graph 1



2D Graph 2



## Adding a macro to the standard macro library

### a) The standard macro library

Your standard macro library includes all sample macros installed with SigmaPlot. It is here by default: \My Documents\SigmaPlot\SPW12\SigmaPlot Macro Library.jnb (a copy of the original library in Program Files\SigmaPlot\SPW12. This way, each user on a machine can have his own set of library and .ini files).

You can change the standard macro library path in the Application button > Options dialog.



You might use project-specific library files.

At the Macro library field, press the Browse button, and edit the field.

### b) Add the Label Symbols macro to the standard macro library

You have downloaded and opened the notebook file with the Label Symbols macro (see above).

Now also open the standard macro library:

Shortcuts:

- Application button > Options > Macro > Macro library shows you the place of that file. Just select the whole field contents (path+filename), and copy it to the clipboard using Ctrl-C).

Click Cancel.

- Application button > Open: paste the clipboard contents into the filename field (Ctrl-V), and click Open. This opens the macro library.

In the Notebook Manager window, Label-TS.JNB, select the Label Symbols macro.

Rightclick > Copy, or Ctrl-C.

Then select the SigmaPlot Macro Library.jnb. Rightclick > Paste, or Ctrl-V.

Save SigmaPlot Macro Library.jnb, and close it.

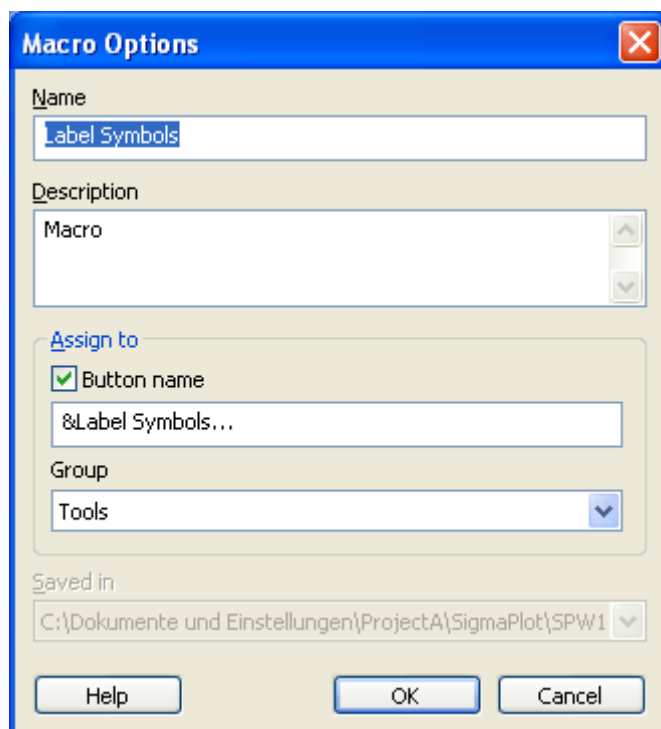
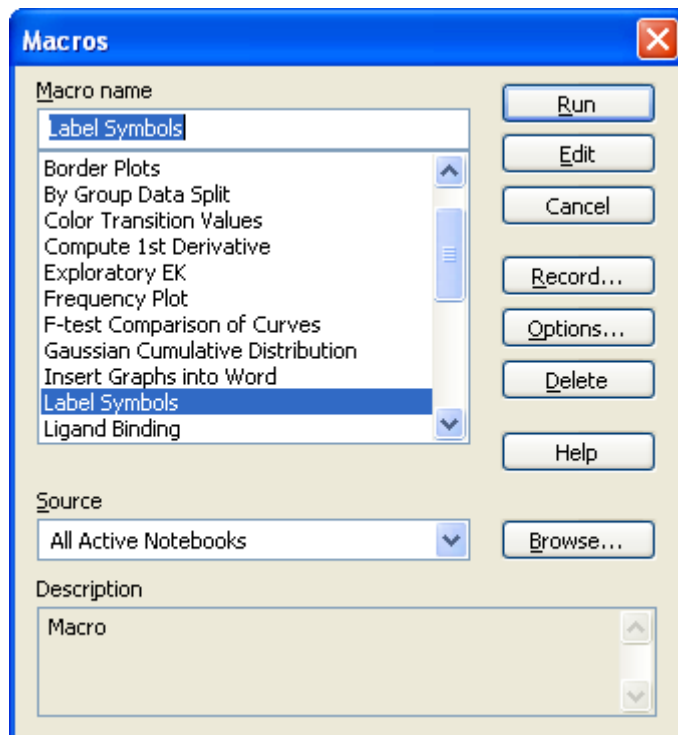
Now the added macro will appear in the list of macros in the ToolBox > Macros dialog.

## Adding a macro to the Tools section of the ToolBox ribbon

SigmaPlot comes with a series of sample macros. They can be opened and run from the ToolBox ribbon > Macros > Macros dialog.

Some comprehensive macros can also be run from shortcuts in the Tools and Pharmacology sections of this ribbon. You can customize these sections. To add or remove a macro from these shortcut sections:

Select the macro in the ToolBox ribbon > Macros > Macros dialog, and click on Options



Check the Button name checkbox, modify the name if necessary, and select the Tools or Pharmacology Group. This is the section where the macro will appear.

Note: This will only add/remove the macros from the shortcut sections. It does not affect the macros themselves. All of them will still be available in the macro dialog.

See also: "Macro Options" in the Online Help.