

## Add an equation to the Standard Fit Library

### 1. The Standard Fit Library

Your Standard Fit Library includes all the equations installed with SigmaPlot.

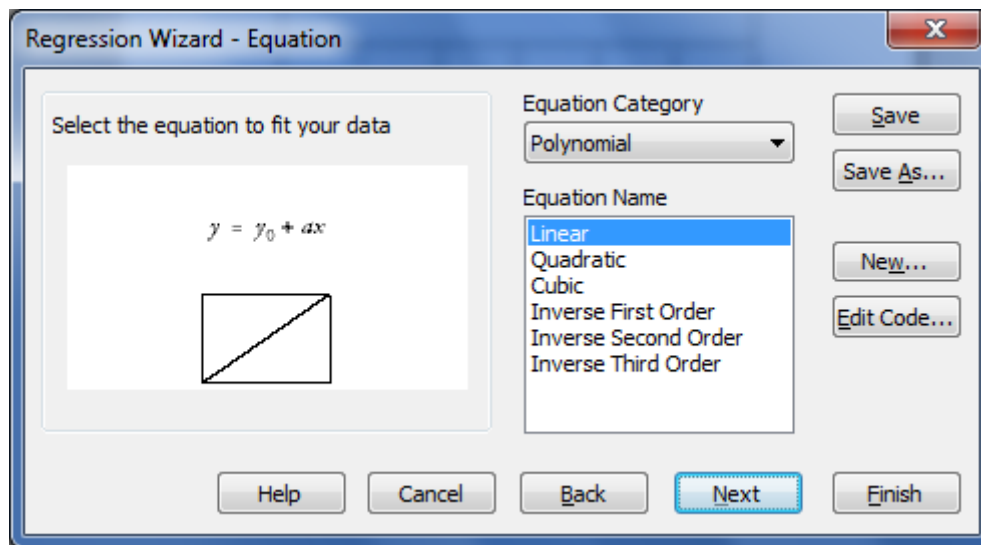
It is here by default: \My Documents\SigmaPlot\SPW12\Standard.jfl.

(This is a copy of the original version of the library in Program Files\SigmaPlot\SPW12.

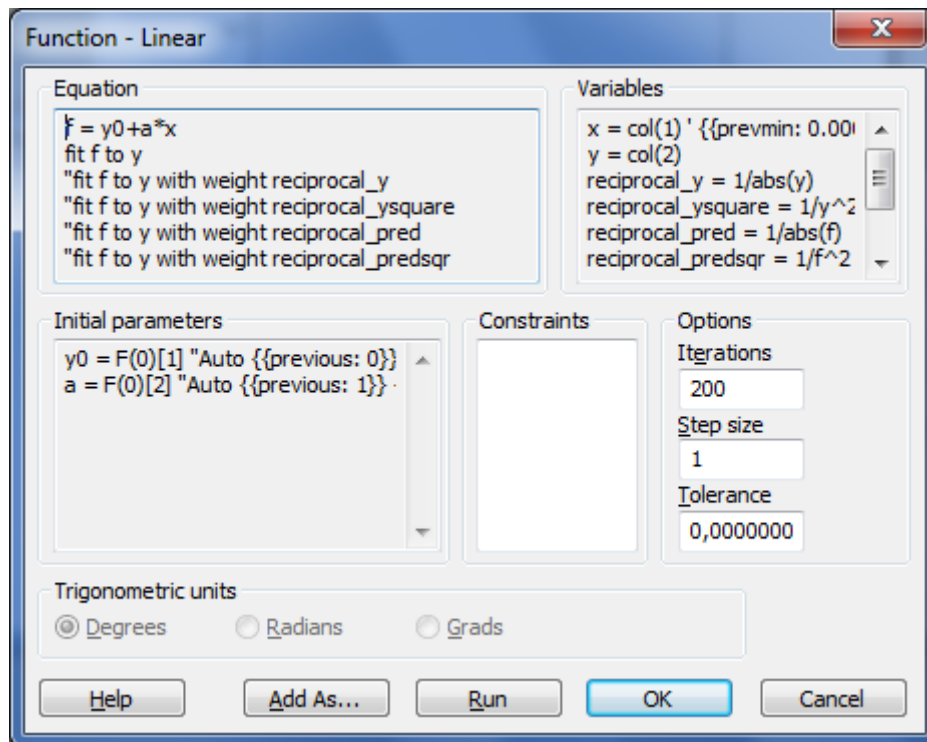
This way, each user on a machine can have their own set of library and .ini files).

### 2. Add an equation to the Standard Fit Library

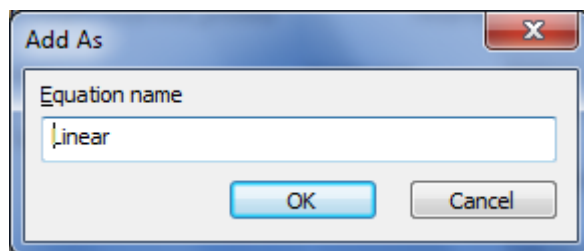
#### a) Modify an existing equation



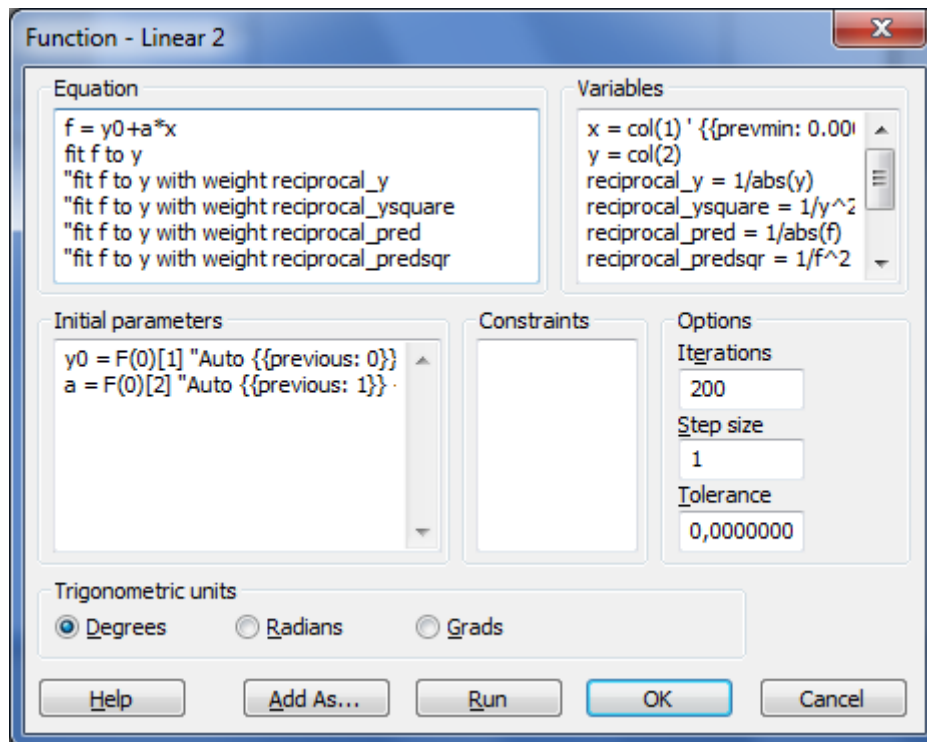
In the Regression Wizard, click on the „Edit Code...” button.



Click on „Add As...“,



and enter a name for the new equation, e.g. „Linear 2“, and click on OK.

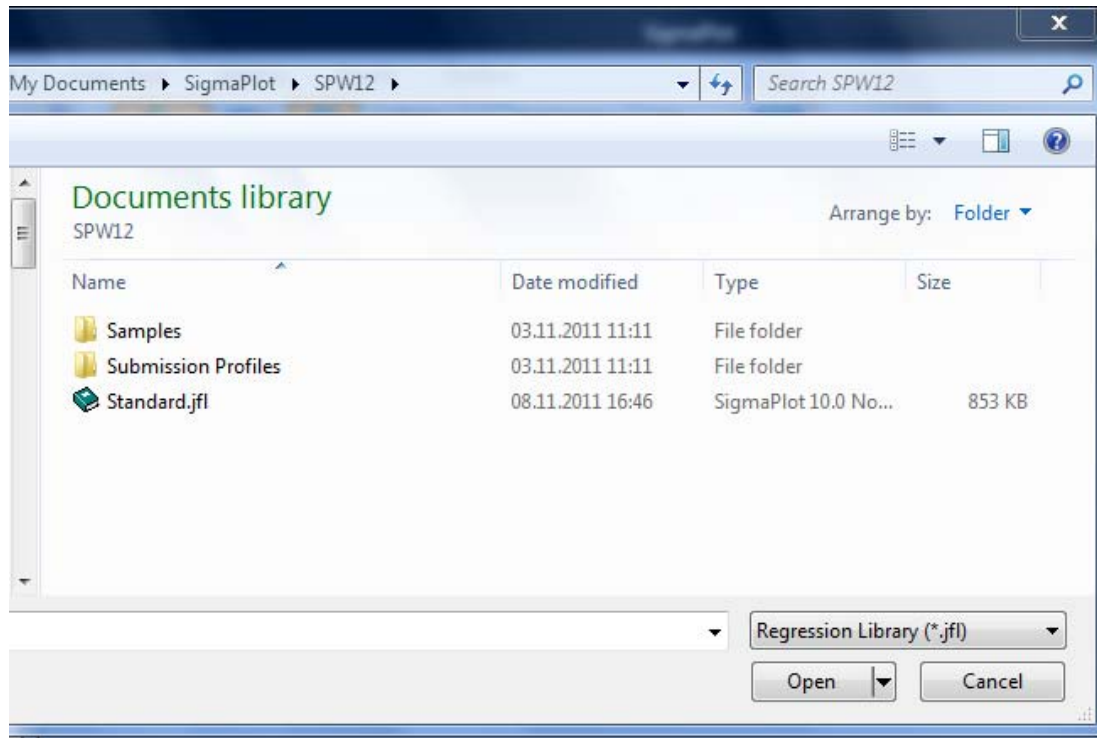


The background of the individual windows turns to white,  
 You can now edit their contents, save the new equation, and use it to fit your data.

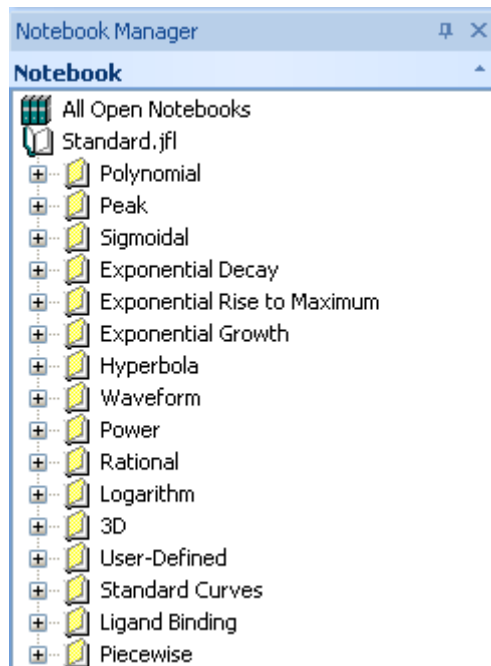
b) Copy an equation from a notebook file into the Standard Fit Library.

Open the Standard Fit Library.

(with the file type set to Regression Library (\*.jfl)).

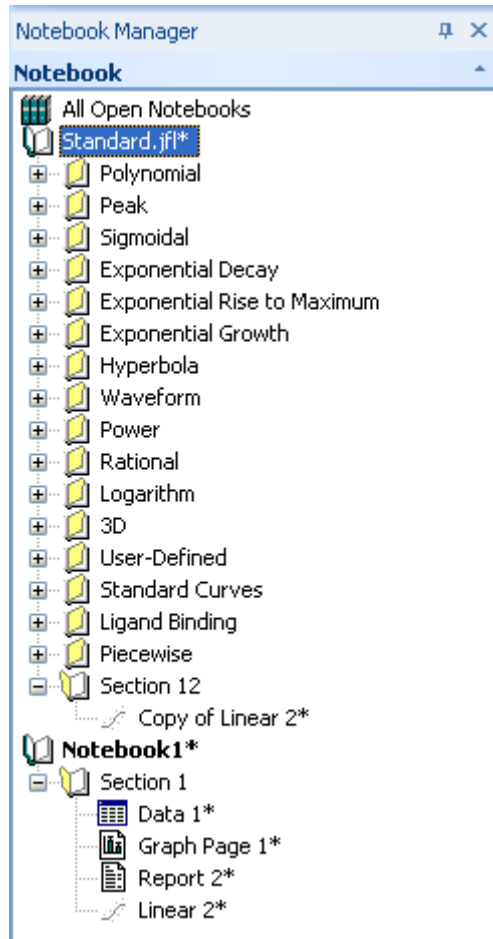


By default, you find the file here: \My Documents\SigmaPlot\SPW12\Standard.jfl.



Copy the new equation (here: „Linear 2“ in „Notebook1.JNB“ to „Standard.JFL“ (Rightclick > Copy and paste, or Ctrl-C/Ctrl-V).

The equation is saved in a new section as „Copy of Linear 2“.  
With Rightclick > Rename you can rename section and equation.  
(Of course you can also delete equations from the file.)



Save and close Standard.JFL. The new equation now appears in the Regression Wizard

